

Acta Crystallographica Section E

## Structure Reports

Online

ISSN 1600-5368

## 4-(4-Chloro-5-methyl-3-trifluoromethyl-1H-pyrazol-1-yl)-6-(prop-2-ynoxy)-pyrimidine

Ru-Liang Xie, Tao Zhang, Ao-Cheng Cao and Xiang-Dong Mei\*

State Key Laboratory for the Biology of Plant Diseases and Insect Pests, Institute of Plant Protection, Chinese Academy of Agricultural Sciences, Beijing 100193, People's Republic of China

Correspondence e-mail: meixiangdong@gmail.com

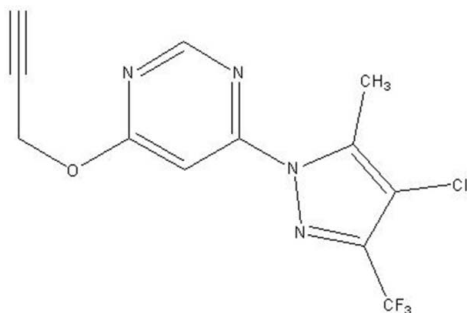
Received 6 January 2010; accepted 7 August 2010

Key indicators: single-crystal X-ray study;  $T = 173$  K; mean  $\sigma(\text{C}-\text{C}) = 0.003$  Å; disorder in main residue;  $R$  factor = 0.044;  $wR$  factor = 0.106; data-to-parameter ratio = 10.7.

The molecule of the title compound,  $\text{C}_{12}\text{H}_8\text{ClF}_3\text{N}_4\text{O}$ , is twisted as indicated by the  $\text{C}-\text{O}-\text{C}-\text{C}$  torsion angle of  $76.9$  (3)°. Moreover, the trifluoromethyl group shows rotational disorder of the F atoms, with site-occupancy factors of 0.653 (6) and 0.347 (6). The dihedral angle between the rings is  $1.88$  (12) Å.

## Related literature

For the applications of pyrazole derivatives, see: Hirai *et al.* (2002); Krishnaiah *et al.* (2002); Ohno *et al.* (2004); Li *et al.* (2008); Shiga *et al.* (2003); Vicentini *et al.* (2007).



## Experimental

## Crystal data

 $\text{C}_{12}\text{H}_8\text{ClF}_3\text{N}_4\text{O}$  $M_r = 316.67$ Monoclinic,  $P2_1/n$  $a = 7.8331$  (13) Å $b = 7.7258$  (12) Å $c = 21.757$  (4) Å $\beta = 99.270$  (11)° $V = 1299.5$  (4) Å<sup>3</sup> $Z = 4$ Cu  $K\alpha$  radiation $\mu = 3.02$  mm<sup>-1</sup> $T = 173$  K $0.20 \times 0.20 \times 0.10$  mm

## Data collection

Rigaku R-Axis RAPID IP area-detector diffractometer

Absorption correction: multi-scan (ABSCOR; Higashi, 1995)

 $T_{\min} = 0.583$ ,  $T_{\max} = 0.752$ 

8543 measured reflections

2361 independent reflections

2009 reflections with  $I > 2\sigma(I)$  $R_{\text{int}} = 0.043$ 

## Refinement

 $R[F^2 > 2\sigma(F^2)] = 0.044$  $wR(F^2) = 0.106$  $S = 1.07$ 

2361 reflections

220 parameters

69 restraints

H-atom parameters constrained

 $\Delta\rho_{\max} = 0.31$  e Å<sup>-3</sup> $\Delta\rho_{\min} = -0.22$  e Å<sup>-3</sup>

Data collection: *RAPID-AUTO* (Rigaku, 2001); cell refinement: *RAPID-AUTO*; data reduction: *RAPID-AUTO*; program(s) used to solve structure: *SHELXS97* (Sheldrick, 2008); program(s) used to refine structure: *SHELXL97* (Sheldrick, 2008); molecular graphics: *XP* (Siemens, 1998); software used to prepare material for publication: *SHELXL97*.

This work was supported by the Agricultural Public Sector Research and Special Funds (200803021) and the Major State Basic Research Development Program of China (No. 2006CB101907 and No. 2010CB126106).

Supplementary data and figures for this paper are available from the IUCr electronic archives (Reference: RN2068).

## References

- Higashi, T. (1995). *ABSCOR*. Rigaku Corporation, Tokyo, Japan.
- Hirai, K., Uchida, A. & Ohno, R. (2002). *Herbicide Classes in Development*, edited by P. Boger, K. Hirai & K. Wakabayashi, pp. 279–289. Heidelberg: Springer-Verlag.
- Krishnaiah, A. & Narsaiah, B. (2002). *J. Fluorine Chem.* **115**, 9–11.
- Li, H. B., Zhu, Y. Q., Song, X. W., Hu, F. Z., Liu, B., Li, Y. H., Niu, Z. X., Liu, P., Wang, Z. H., Song, H. B., Zou, X. M. & Yang, H. Z. (2008). *J. Agric. Food Chem.* **56**, 9535–9542.
- Ohno, R., Watanabe, A., Nagaoka, M., Ueda, T., Sakurai, H., Hori, M. & Hirai, K. (2004). *J. Pestic. Sci.* **29**, 15–26.
- Rigaku (2001). *RAPID-AUTO*. Rigaku Corporation, Tokyo, Japan.
- Sheldrick, G. M. (2008). *Acta Cryst.* **A64**, 112–122.
- Shiga, Y., Okada, I., Ikeda, Y., Takizawa, E. & Fukuchi, T. (2003). *J. Pestic. Sci.* **28**, 313–314.
- Siemens (1998). *XP*. Siemens Analytical X-ray Instruments Inc., Madison, Wisconsin, USA.
- Vicentini, C. B., Romagnoli, C., Andreotti, E. & Mares, D. (2007). *J. Agric. Food Chem.* **55**, 10331–10338.

**supplementary materials**

*Acta Cryst.* (2010). E66, o2307 [ doi:10.1107/S1600536810031740 ]

#### 4-(4-Chloro-5-methyl-3-trifluoromethyl-1*H*-pyrazol-1-yl)-6-(prop-2-ynyloxy)pyrimidine

R.-L. Xie, T. Zhang, A.-C. Cao and X.-D. Mei

##### Comment

There is much agrochemical interest in pyrazole derivatives because of their excellent bioactivity (Krishnaiah *et al.*, 2002; Ohno *et al.*, 2004; Li *et al.*, 2008 Shiga *et al.*, 2003; Vicentini *et al.*, 2007). Numerous herbicides such as pyrazolate, pyrazoxyfen, benzofenap, pyraflufen-ethyl, fluazolate and pyrazosulfuron-ethyl with pyrazole moieties were commercialized (Hirai *et al.*, 2002). Recently, a novel pyrazole derivative (I) with a trifluoromethyl group was synthesized. The trifluoromethyl group shows rotational disorder of the F atoms, with site occupancy factors of 0.653 (6) and 0.347 (6). This molecule is twisted, prop-2-ynyloxy is out of the pyrimidine ring plane, as indicated by the C(8)—O(1)—C(10)—C(11) torsion angle of 76.9 (3)°. The crystal structure of the title compound is shown in Fig. 1.

##### Experimental

The title compound (0.15 g) was dissolved in the mixed solvent of ethanol and acetone (25 mL) at room temperature. Colorless single crystals of compound (I) were obtained through slow evaporation after two weeks.

##### Refinement

The trifluoromethyl group shows rotational disorder of the F atoms, with site occupancy factors of 0.653 (6) and 0.347 (6). All the hydrogen atoms were placed at their geometrical position with C—H = 0.93–0.98 Å and  $U_{\text{iso}}(\text{H}) = 1.2\text{--}1.5U_{\text{eq}}(\text{C})$ .

##### Figures

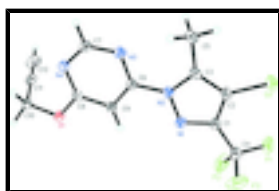


Fig. 1. The structure of the title compound with labeling scheme; displacement ellipsoids are shown at the 30% probability level and atoms F1', F2' and F3' representing the smaller fraction of the disordered trifluoromethyl group have been excluded.

#### 4-(4-Chloro-5-methyl-3-trifluoromethyl-1*H*-pyrazol-1-yl)-6-(prop-2-ynyloxy)pyrimidine

##### Crystal data

$\text{C}_{12}\text{H}_8\text{ClF}_3\text{N}_4\text{O}$

$M_r = 316.67$

Monoclinic,  $P2_1/n$

$a = 7.8331(13) \text{ \AA}$

$b = 7.7258(12) \text{ \AA}$

$c = 21.757(4) \text{ \AA}$

$F(000) = 640$

$D_x = 1.619 \text{ Mg m}^{-3}$

Cu  $K\alpha$  radiation,  $\lambda = 1.54186 \text{ \AA}$

Cell parameters from 564 reflections

$\theta = 2.2\text{--}68.3^\circ$

$\mu = 3.02 \text{ mm}^{-1}$

# supplementary materials

---

$\beta = 99.270 (11)^\circ$   
 $V = 1299.5 (4) \text{ \AA}^3$   
 $Z = 4$

$T = 173 \text{ K}$   
Platelet, colorless  
 $0.20 \times 0.20 \times 0.10 \text{ mm}$

## Data collection

Rigaku R-Axis RAPID IP area-detector diffractometer  
Radiation source: rotating anode graphite  
 $\omega$  scans at fixed  $\chi = 45^\circ$   
Absorption correction: multi-scan (ABSCOR; Higashi, 1995)  
 $T_{\min} = 0.583$ ,  $T_{\max} = 0.752$   
8543 measured reflections

2361 independent reflections  
2009 reflections with  $I > 2\sigma(I)$   
 $R_{\text{int}} = 0.043$   
 $\theta_{\max} = 68.3^\circ$ ,  $\theta_{\min} = 4.1^\circ$   
 $h = -9 \rightarrow 9$   
 $k = -9 \rightarrow 6$   
 $l = -26 \rightarrow 22$

## Refinement

Refinement on  $F^2$   
Least-squares matrix: full  
 $R[F^2 > 2\sigma(F^2)] = 0.044$   
 $wR(F^2) = 0.106$   
 $S = 1.07$   
2361 reflections  
220 parameters  
69 restraints  
Primary atom site location: structure-invariant direct methods

Secondary atom site location: difference Fourier map  
Hydrogen site location: inferred from neighbouring sites  
H-atom parameters constrained  
 $w = 1/[\sigma^2(F_o^2) + (0.0399P)^2 + 0.8523P]$   
where  $P = (F_o^2 + 2F_c^2)/3$   
 $(\Delta/\sigma)_{\max} = 0.016$   
 $\Delta\rho_{\max} = 0.31 \text{ e \AA}^{-3}$   
 $\Delta\rho_{\min} = -0.22 \text{ e \AA}^{-3}$   
Extinction correction: SHELXL97 (Sheldrick, 2008),  
 $F_c^* = kF_c[1 + 0.001 \times F_c^2 \lambda^3 / \sin(2\theta)]^{-1/4}$   
Extinction coefficient: 0.0054 (5)

## Special details

**Geometry.** All esds (except the esd in the dihedral angle between two l.s. planes) are estimated using the full covariance matrix. The cell esds are taken into account individually in the estimation of esds in distances, angles and torsion angles; correlations between esds in cell parameters are only used when they are defined by crystal symmetry. An approximate (isotropic) treatment of cell esds is used for estimating esds involving l.s. planes.

**Refinement.** Refinement of  $F^2$  against ALL reflections. The weighted  $R$ -factor  $wR$  and goodness of fit  $S$  are based on  $F^2$ , conventional  $R$ -factors  $R$  are based on  $F$ , with  $F$  set to zero for negative  $F^2$ . The threshold expression of  $F^2 > \sigma(F^2)$  is used only for calculating  $R$ -factors(gt) etc. and is not relevant to the choice of reflections for refinement.  $R$ -factors based on  $F^2$  are statistically about twice as large as those based on  $F$ , and  $R$ -factors based on ALL data will be even larger.

## Fractional atomic coordinates and isotropic or equivalent isotropic displacement parameters ( $\text{Å}^2$ )

	$x$	$y$	$z$	$U_{\text{iso}}^*/U_{\text{eq}}$	Occ. (<1)
Cl1	0.05485 (8)	0.66461 (9)	0.12912 (3)	0.0419 (2)	

F1	0.0581 (14)	1.0026 (19)	0.2067 (6)	0.068 (3)	0.65 (3)
F2	0.1586 (17)	1.2382 (8)	0.1787 (5)	0.066 (2)	0.65 (3)
F3	0.3301 (10)	1.040 (2)	0.2184 (4)	0.080 (3)	0.65 (3)
F1'	0.038 (2)	1.038 (4)	0.2018 (12)	0.062 (4)	0.35 (3)
F2'	0.229 (4)	1.227 (2)	0.1908 (8)	0.074 (4)	0.35 (3)
F3'	0.298 (3)	0.977 (3)	0.2215 (7)	0.076 (4)	0.35 (3)
O1	0.4744 (2)	1.4528 (2)	-0.08155 (7)	0.0328 (4)	
N1	0.2473 (2)	1.0968 (3)	0.07612 (9)	0.0307 (5)	
N2	0.2397 (2)	0.9953 (2)	0.02454 (9)	0.0273 (4)	
N3	0.2814 (3)	0.9661 (3)	-0.07855 (9)	0.0339 (5)	
N4	0.4008 (2)	1.1943 (3)	-0.13275 (9)	0.0300 (5)	
C1	0.1864 (3)	0.9977 (3)	0.11729 (11)	0.0298 (5)	
C2	0.1401 (3)	0.8333 (3)	0.09272 (11)	0.0292 (5)	
C3	0.1757 (3)	0.8320 (3)	0.03301 (11)	0.0280 (5)	
C4	0.1845 (3)	1.0661 (4)	0.18093 (13)	0.0407 (6)	
C5	0.1542 (3)	0.6869 (3)	-0.01239 (12)	0.0369 (6)	
H5A	0.2630	0.6681	-0.0282	0.055*	
H5B	0.0626	0.7155	-0.0471	0.055*	
H5C	0.1228	0.5814	0.0082	0.055*	
C6	0.2966 (3)	1.0682 (3)	-0.02856 (10)	0.0261 (5)	
C7	0.3362 (3)	1.0361 (3)	-0.12775 (12)	0.0349 (6)	
H7A	0.3284	0.9648	-0.1637	0.042*	
C8	0.4111 (3)	1.2901 (3)	-0.08172 (11)	0.0271 (5)	
C9	0.3614 (3)	1.2338 (3)	-0.02663 (10)	0.0275 (5)	
H9A	0.3714	1.3042	0.0096	0.033*	
C10	0.5077 (3)	1.5223 (3)	-0.14053 (11)	0.0350 (6)	
H10A	0.5662	1.4332	-0.1624	0.042*	
H10B	0.5861	1.6231	-0.1325	0.042*	
C11	0.3481 (3)	1.5756 (3)	-0.18034 (11)	0.0355 (6)	
C12	0.2244 (4)	1.6239 (4)	-0.21331 (13)	0.0516 (8)	
H12	0.1240	1.6632	-0.2401	0.062*	

Atomic displacement parameters ( $\text{\AA}^2$ )

	$U^{11}$	$U^{22}$	$U^{33}$	$U^{12}$	$U^{13}$	$U^{23}$
C11	0.0394 (4)	0.0400 (4)	0.0474 (4)	-0.0066 (3)	0.0100 (3)	0.0144 (3)
F1	0.087 (5)	0.079 (5)	0.049 (3)	-0.028 (4)	0.042 (4)	-0.006 (3)
F2	0.111 (5)	0.046 (2)	0.048 (3)	0.007 (3)	0.035 (3)	-0.0082 (17)
F3	0.055 (2)	0.137 (6)	0.046 (3)	0.014 (3)	-0.0046 (18)	-0.036 (3)
F1'	0.040 (5)	0.092 (9)	0.058 (6)	0.002 (5)	0.021 (4)	-0.015 (6)
F2'	0.128 (9)	0.058 (5)	0.044 (5)	-0.048 (6)	0.034 (6)	-0.014 (4)
F3'	0.089 (7)	0.092 (8)	0.038 (4)	0.028 (5)	-0.015 (4)	0.006 (5)
O1	0.0436 (10)	0.0302 (9)	0.0243 (9)	-0.0109 (8)	0.0043 (7)	0.0016 (7)
N1	0.0350 (11)	0.0304 (11)	0.0280 (11)	-0.0009 (9)	0.0088 (8)	-0.0017 (8)
N2	0.0286 (10)	0.0263 (10)	0.0275 (10)	-0.0011 (8)	0.0057 (8)	0.0002 (8)
N3	0.0423 (12)	0.0294 (11)	0.0307 (11)	-0.0047 (9)	0.0079 (9)	-0.0037 (9)
N4	0.0310 (10)	0.0307 (11)	0.0288 (11)	-0.0015 (9)	0.0064 (8)	-0.0027 (8)
C1	0.0274 (12)	0.0326 (13)	0.0302 (13)	0.0023 (10)	0.0070 (9)	0.0035 (10)

## supplementary materials

---

C2	0.0239 (11)	0.0312 (13)	0.0329 (13)	-0.0002 (10)	0.0058 (9)	0.0075 (10)
C3	0.0220 (11)	0.0263 (12)	0.0350 (13)	0.0006 (9)	0.0023 (9)	0.0026 (10)
C4	0.0404 (14)	0.0476 (17)	0.0370 (15)	-0.0060 (13)	0.0149 (12)	0.0012 (12)
C5	0.0393 (13)	0.0305 (13)	0.0405 (15)	-0.0069 (11)	0.0053 (11)	-0.0012 (11)
C6	0.0237 (11)	0.0276 (12)	0.0269 (12)	0.0016 (9)	0.0040 (9)	0.0013 (9)
C7	0.0447 (14)	0.0318 (14)	0.0292 (13)	-0.0044 (11)	0.0095 (11)	-0.0075 (10)
C8	0.0243 (11)	0.0260 (12)	0.0305 (13)	-0.0012 (9)	0.0032 (9)	0.0005 (10)
C9	0.0320 (12)	0.0254 (12)	0.0248 (12)	-0.0024 (10)	0.0035 (9)	-0.0017 (9)
C10	0.0406 (14)	0.0362 (14)	0.0290 (13)	-0.0099 (11)	0.0078 (10)	0.0053 (11)
C11	0.0497 (15)	0.0310 (14)	0.0269 (13)	0.0004 (12)	0.0093 (11)	-0.0015 (10)
C12	0.0613 (19)	0.0503 (18)	0.0402 (16)	0.0150 (15)	-0.0008 (14)	-0.0051 (14)

### Geometric parameters ( $\text{\AA}$ , $^\circ$ )

C11—C2	1.715 (2)	C1—C2	1.403 (3)
F1—C4	1.309 (7)	C1—C4	1.484 (4)
F2—C4	1.344 (6)	C2—C3	1.372 (3)
F3—C4	1.306 (7)	C3—C5	1.486 (3)
F1'—C4	1.316 (12)	C5—H5A	0.9800
F2'—C4	1.300 (11)	C5—H5B	0.9800
F3'—C4	1.339 (10)	C5—H5C	0.9800
O1—C8	1.352 (3)	C6—C9	1.374 (3)
O1—C10	1.452 (3)	C7—H7A	0.9500
N1—C1	1.324 (3)	C8—C9	1.389 (3)
N1—N2	1.362 (3)	C9—H9A	0.9500
N2—C3	1.380 (3)	C10—C11	1.461 (3)
N2—C6	1.420 (3)	C10—H10A	0.9900
N3—C7	1.330 (3)	C10—H10B	0.9900
N3—C6	1.333 (3)	C11—C12	1.170 (4)
N4—C8	1.326 (3)	C12—H12	0.9500
N4—C7	1.334 (3)		
C8—O1—C10	117.33 (18)	F3—C4—C1	112.9 (4)
C1—N1—N2	104.57 (19)	F1—C4—C1	112.9 (7)
N1—N2—C3	112.62 (19)	F1'—C4—C1	113.8 (12)
N1—N2—C6	117.62 (18)	F3'—C4—C1	109.1 (8)
C3—N2—C6	129.8 (2)	F2—C4—C1	110.0 (4)
C7—N3—C6	114.7 (2)	C3—C5—H5A	109.5
C8—N4—C7	114.6 (2)	C3—C5—H5B	109.5
N1—C1—C2	111.4 (2)	H5A—C5—H5B	109.5
N1—C1—C4	119.0 (2)	C3—C5—H5C	109.5
C2—C1—C4	129.5 (2)	H5A—C5—H5C	109.5
C3—C2—C1	106.7 (2)	H5B—C5—H5C	109.5
C3—C2—C11	125.8 (2)	N3—C6—C9	124.0 (2)
C1—C2—C11	127.46 (19)	N3—C6—N2	115.5 (2)
C2—C3—N2	104.7 (2)	C9—C6—N2	120.5 (2)
C2—C3—C5	128.1 (2)	N3—C7—N4	127.9 (2)
N2—C3—C5	127.3 (2)	N3—C7—H7A	116.1
F2'—C4—F3	81.9 (8)	N4—C7—H7A	116.1
F2'—C4—F1	119.3 (10)	N4—C8—O1	119.6 (2)

F3—C4—F1	108.6 (7)	N4—C8—C9	124.1 (2)
F2'—C4—F1'	109.0 (14)	O1—C8—C9	116.3 (2)
F3—C4—F1'	118.7 (11)	C6—C9—C8	114.7 (2)
F1—C4—F1'	14.2 (15)	C6—C9—H9A	122.6
F2'—C4—F3'	104.4 (9)	C8—C9—H9A	122.6
F3—C4—F3'	24.2 (8)	O1—C10—C11	111.7 (2)
F1—C4—F3'	89.7 (10)	O1—C10—H10A	109.3
F1'—C4—F3'	102.3 (13)	C11—C10—H10A	109.3
F2'—C4—F2	25.2 (10)	O1—C10—H10B	109.3
F3—C4—F2	106.6 (5)	C11—C10—H10B	109.3
F1—C4—F2	105.4 (7)	H10A—C10—H10B	107.9
F1'—C4—F2	92.4 (11)	C12—C11—C10	177.0 (3)
F3'—C4—F2	127.7 (7)	C11—C12—H12	180.0
F2'—C4—C1	116.8 (7)		
C1—N1—N2—C3	-0.5 (2)	C2—C1—C4—F1'	-49.2 (13)
C1—N1—N2—C6	179.62 (18)	N1—C1—C4—F3'	-112.0 (12)
N2—N1—C1—C2	0.1 (2)	C2—C1—C4—F3'	64.2 (13)
N2—N1—C1—C4	177.0 (2)	N1—C1—C4—F2	32.5 (7)
N1—C1—C2—C3	0.3 (3)	C2—C1—C4—F2	-151.3 (7)
C4—C1—C2—C3	-176.2 (2)	C7—N3—C6—C9	0.6 (3)
N1—C1—C2—C11	-179.60 (17)	C7—N3—C6—N2	-179.65 (19)
C4—C1—C2—C11	3.9 (4)	N1—N2—C6—N3	-177.90 (19)
C1—C2—C3—N2	-0.6 (2)	C3—N2—C6—N3	2.3 (3)
C11—C2—C3—N2	179.31 (16)	N1—N2—C6—C9	1.8 (3)
C1—C2—C3—C5	178.3 (2)	C3—N2—C6—C9	-178.0 (2)
C11—C2—C3—C5	-1.8 (4)	C6—N3—C7—N4	-1.0 (4)
N1—N2—C3—C2	0.7 (2)	C8—N4—C7—N3	0.4 (4)
C6—N2—C3—C2	-179.5 (2)	C7—N4—C8—O1	-179.9 (2)
N1—N2—C3—C5	-178.1 (2)	C7—N4—C8—C9	0.6 (3)
C6—N2—C3—C5	1.7 (4)	C10—O1—C8—N4	7.7 (3)
N1—C1—C4—F2'	6.0 (16)	C10—O1—C8—C9	-172.72 (19)
C2—C1—C4—F2'	-177.7 (16)	N3—C6—C9—C8	0.2 (3)
N1—C1—C4—F3	-86.4 (9)	N2—C6—C9—C8	-179.49 (19)
C2—C1—C4—F3	89.9 (9)	N4—C8—C9—C6	-0.9 (3)
N1—C1—C4—F1	150.0 (8)	O1—C8—C9—C6	179.58 (19)
C2—C1—C4—F1	-33.8 (8)	C8—O1—C10—C11	76.9 (3)
N1—C1—C4—F1'	134.5 (13)	O1—C10—C11—C12	149 (6)

Fig. 1

